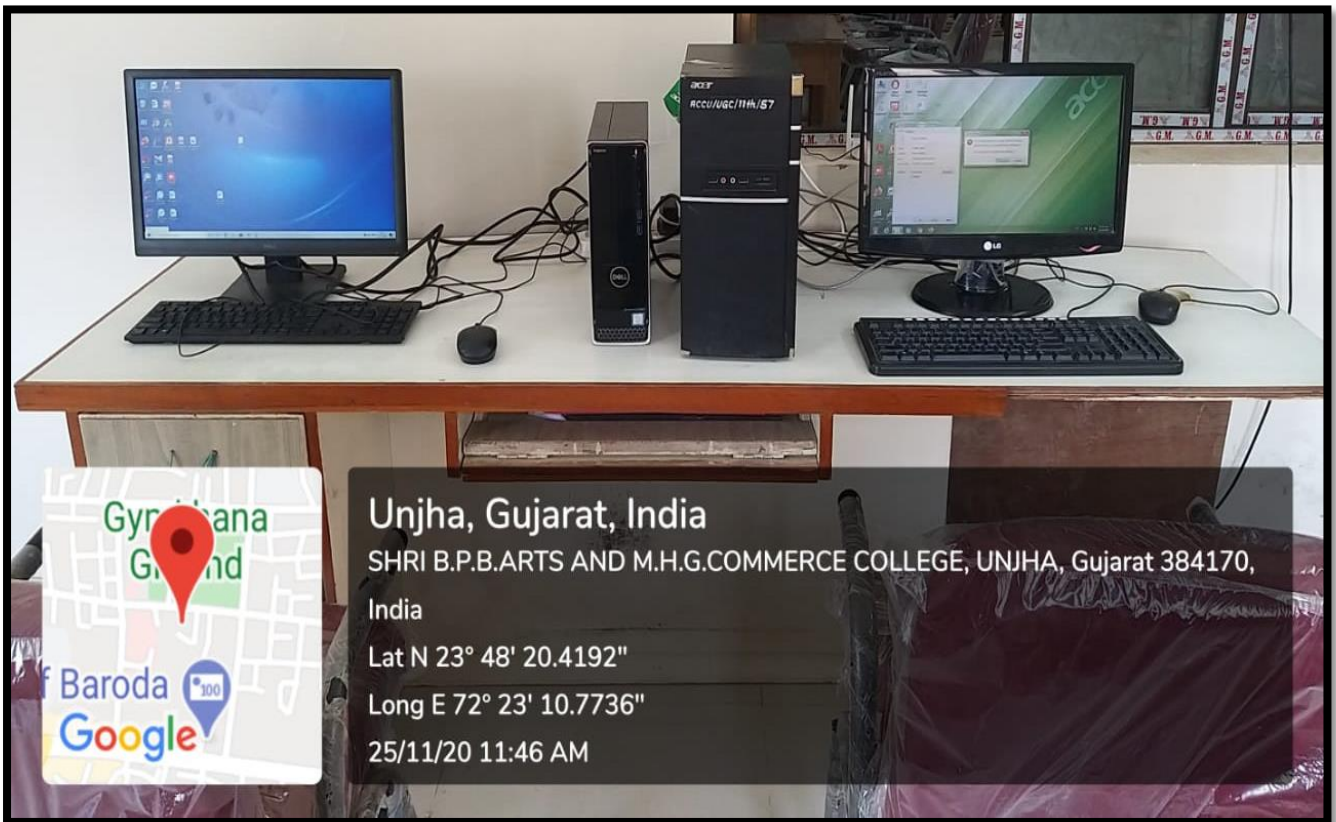


# Mahatma Gandhi Memorial Library And Research Centre

## Computers



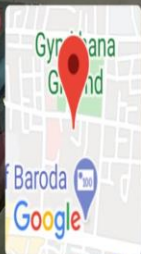
Unjha, Gujarat, India

SHRI B.P.B.ARTS AND M.H.G.COMMERCE COLLEGE, UNJHA, Gujarat 384170, India

Lat N 23° 48' 20.4192"

Long E 72° 23' 10.7736"

25/11/20 11:46 AM



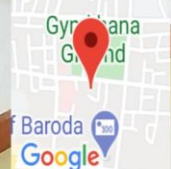
Unjha, Gujarat, India

SHRI B.P.B.ARTS AND M.H.G.COMMERCE COLLEGE, UNJHA, Gujarat 384170, India

Lat N 23° 48' 20.4192"

Long E 72° 23' 10.7736"

25/11/20 11:59 AM



Unjha, Gujarat, India

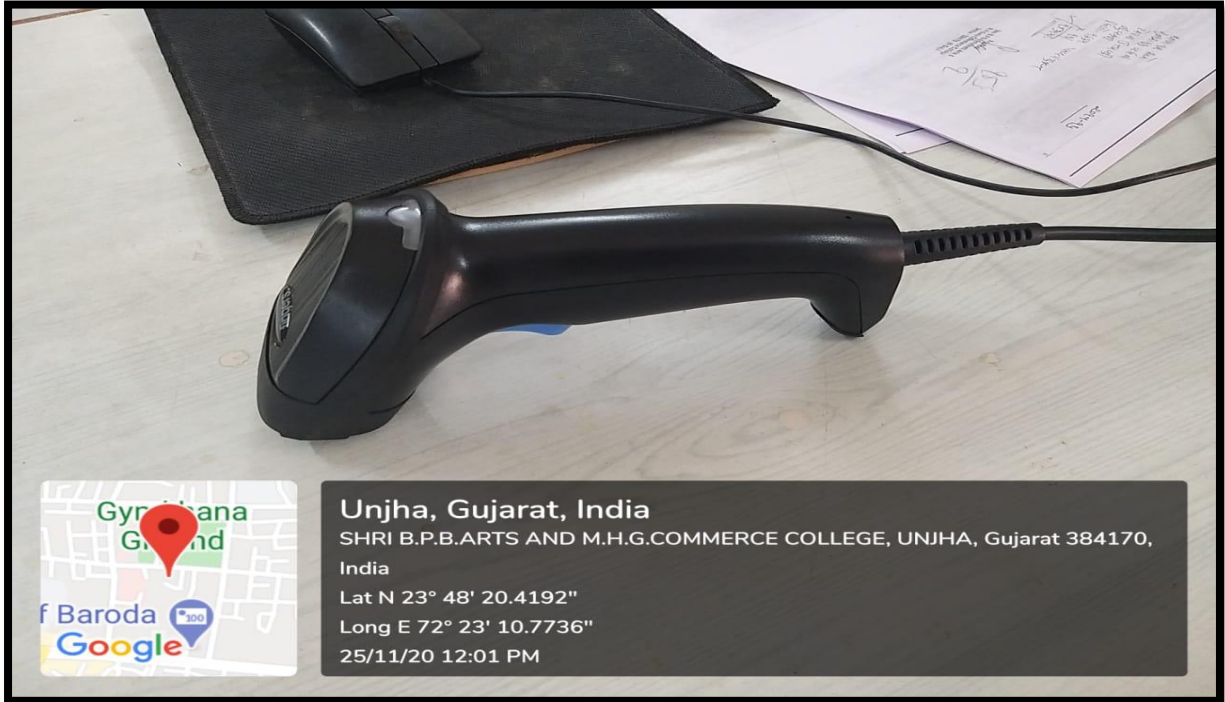
SHRI B.P.B.ARTS AND M.H.G.COMMERCE COLLEGE, UNJHA, Gujarat 384170, India

Lat N 23° 48' 20.4192"

Long E 72° 23' 10.7736"

25/11/20 12:16 PM

## Bar Code Reader/ Printer



## Printer



**Unjha, Gujarat, India**

SHRI B.P.B.ARTS AND M.H.G.COMMERCE COLLEGE, UNJHA, Gujarat 384170,

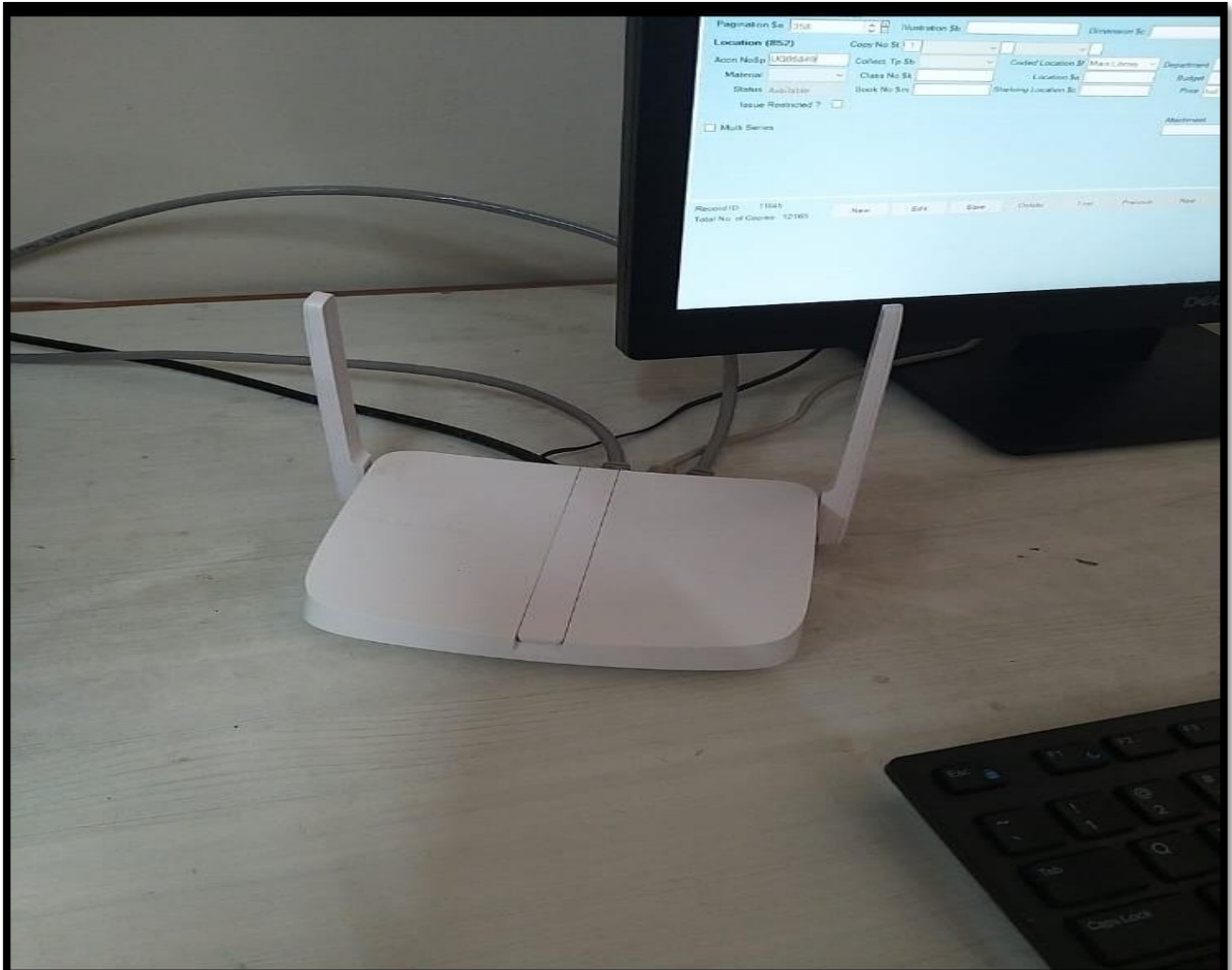
India

Lat N 23° 48' 20.4192"

Long E 72° 23' 10.7736"

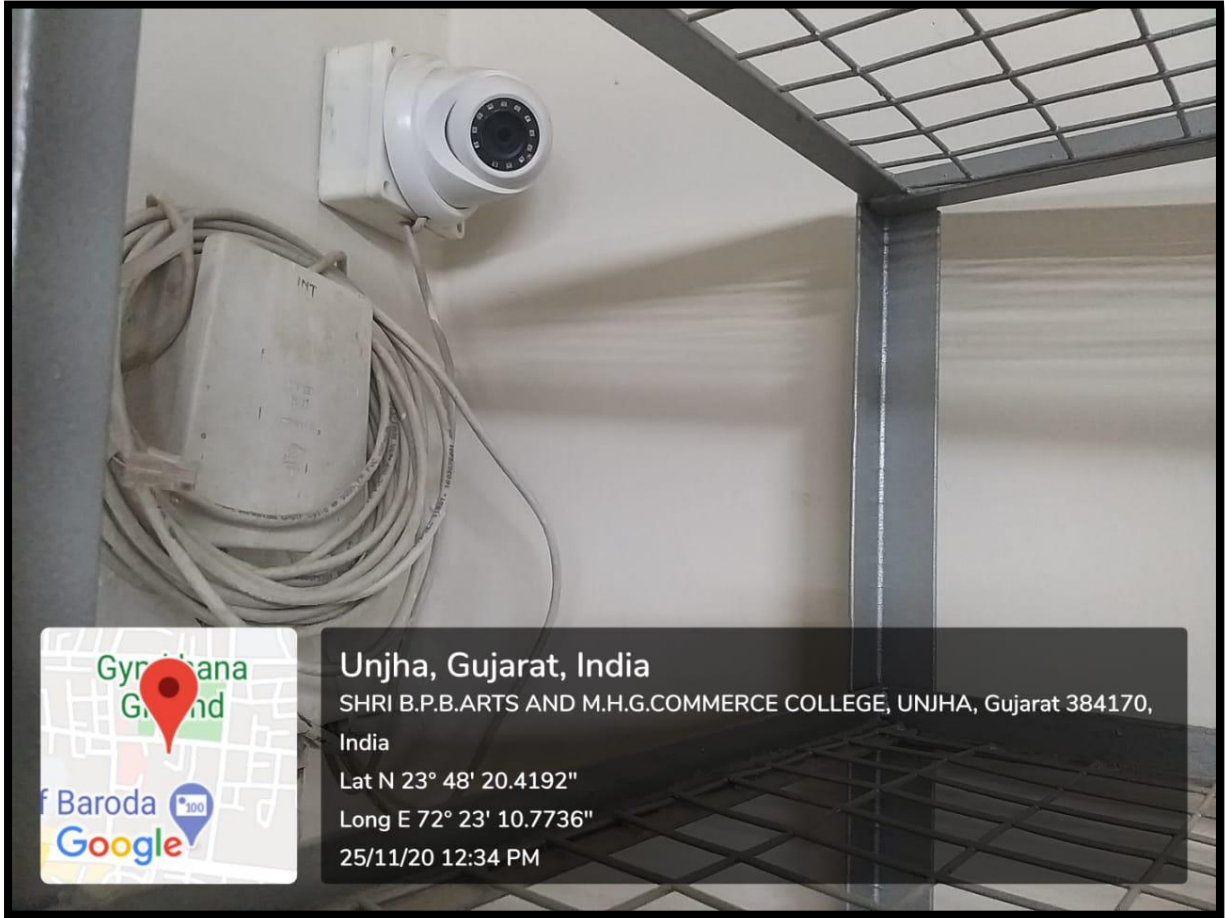
25/11/20 12:20 PM

## Wi-Fi- Internet



Type	Degree	DMS
Latitude	23.80564	23°48'20" N
Longitude	72.38644	72°23'11" W

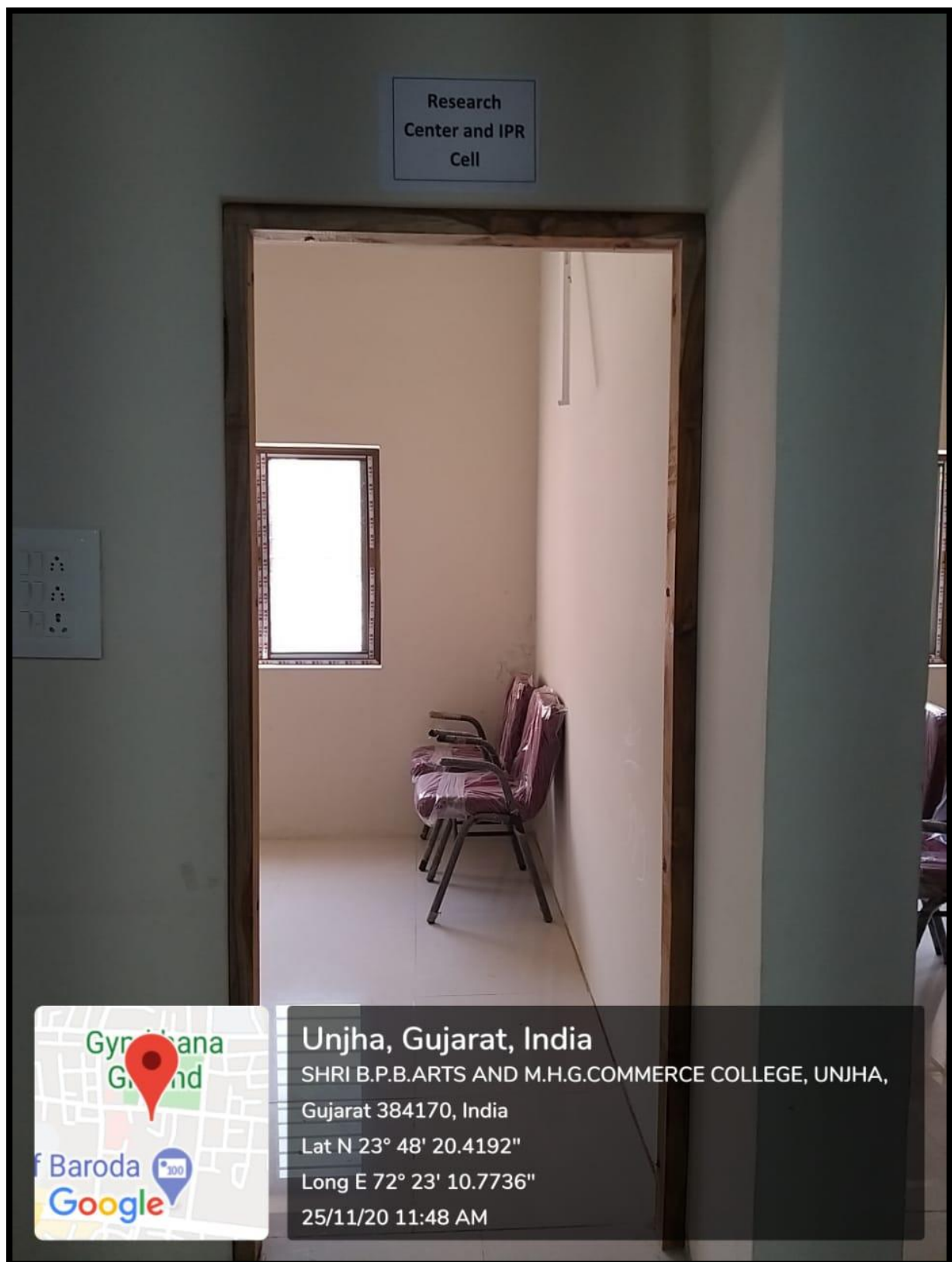
## CCTV Camera



## Student Internet Zone



## Research Center and IPR Cell



**Unjha, Gujarat, India**

SHRI B.P.B.ARTS AND M.H.G.COMMERCE COLLEGE, UNJHA,

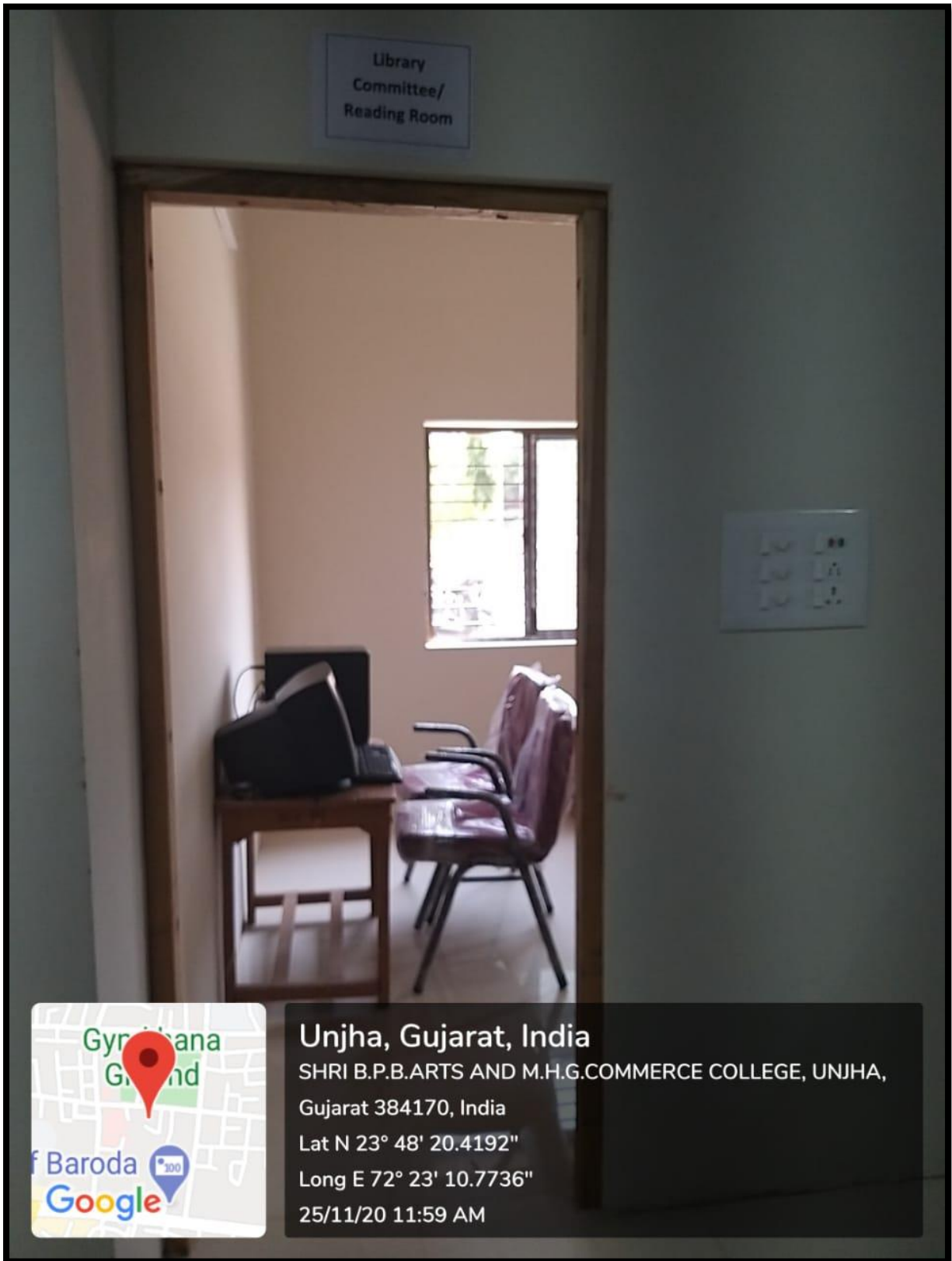
Gujarat 384170, India

Lat N 23° 48' 20.4192"

Long E 72° 23' 10.7736"

25/11/20 11:48 AM

## Library Committee



### Unjha, Gujarat, India

SHRI B.P.B.ARTS AND M.H.G.COMMERCE COLLEGE, UNJHA,

Gujarat 384170, India

Lat N 23° 48' 20.4192"

Long E 72° 23' 10.7736"

25/11/20 11:59 AM